

antbuildz.com

User Guide

Get started with us [➤](#)



Singapore's Largest **Online** Equipment Rental Platform

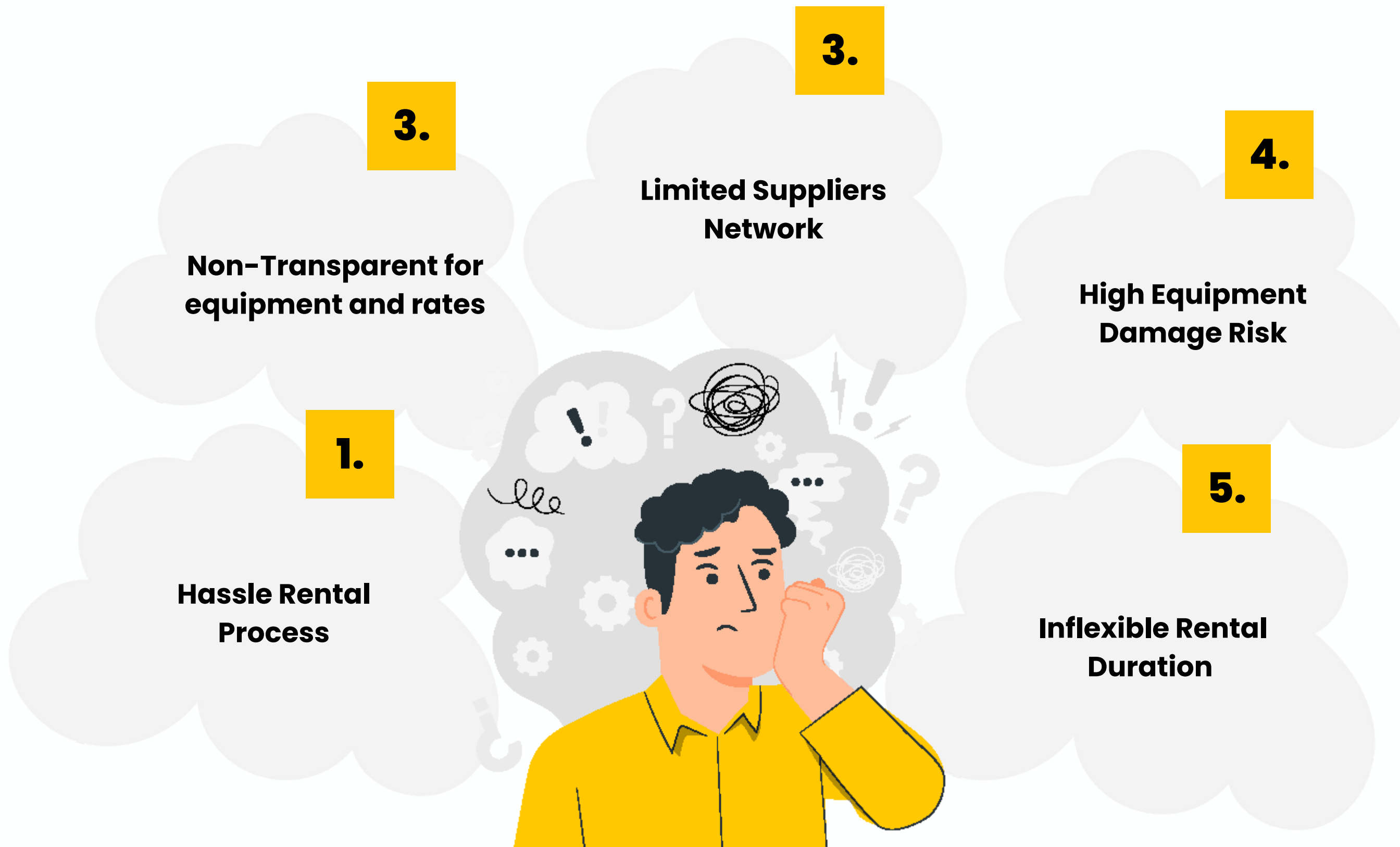
About Us

Antbuildz.com is the **Largest B2B online rental platform** in Singapore that seamlessly connects equipment suppliers with users. We make your equipment rental **Smarter, Faster, Easier, and Safer.**

Now you can **Search, Compare, and Rent** in just a few clicks.



General Problems



Why join us?



Best Rental Rates

No more expensive prices! We help you to discover the best market rates throughout Singapore



Fast & Easy Rental Experience

No more sourcing and negotiating! We help you source and compare quotes within a few clicks



Flexible Rental Duration

Equipment is available for rental for as short as one day or as long as you need it!



Rental Protection \$15,000

Reduce your equipment risk with our exclusive Antbuildz Rental Protection and cover your damage risk up to \$15,000



100% Transparency

View all equipment availability, prices, and agreement, terms & conditions, and information all at one glance

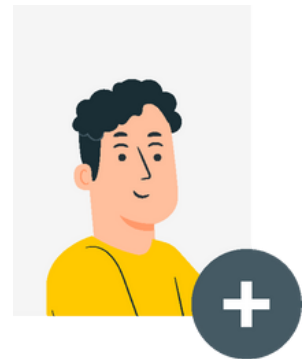
User's requirement

As long as...

1. You are representing a registered company or individual
2. You provide accurate information when you sign-up
3. You or your team possess competent technical knowledge in handling and operating the equipment

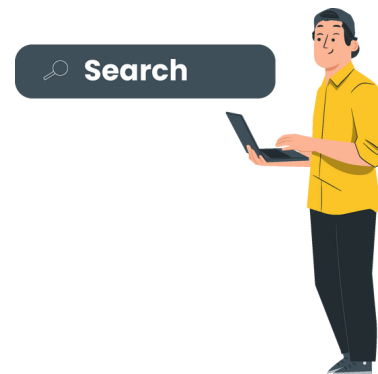
How to rent equipment from us?

In Easy 4 Steps:



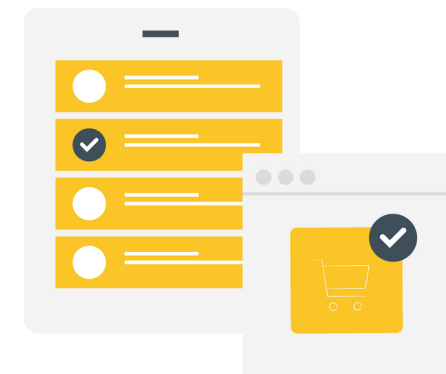
Register as a User

(Click "Sign Up" on the upper right tab and create a free Antbuildz account.)



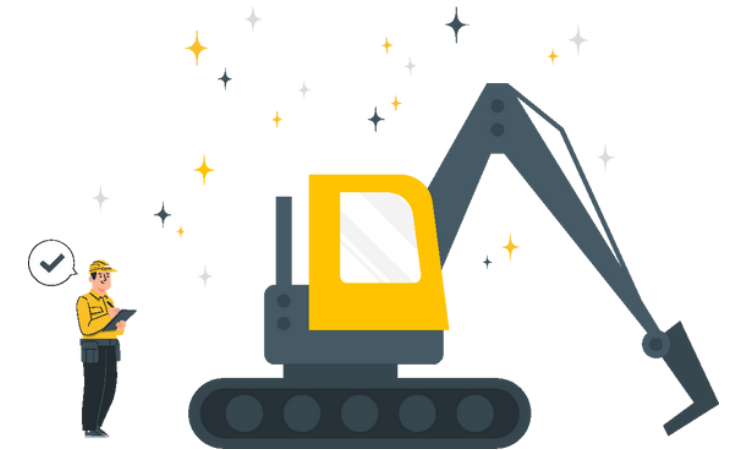
Search & compare your equipment

(Click "Rental" on the menu and search for the equipment you wish to rent.)



Reserve and confirm your equipment

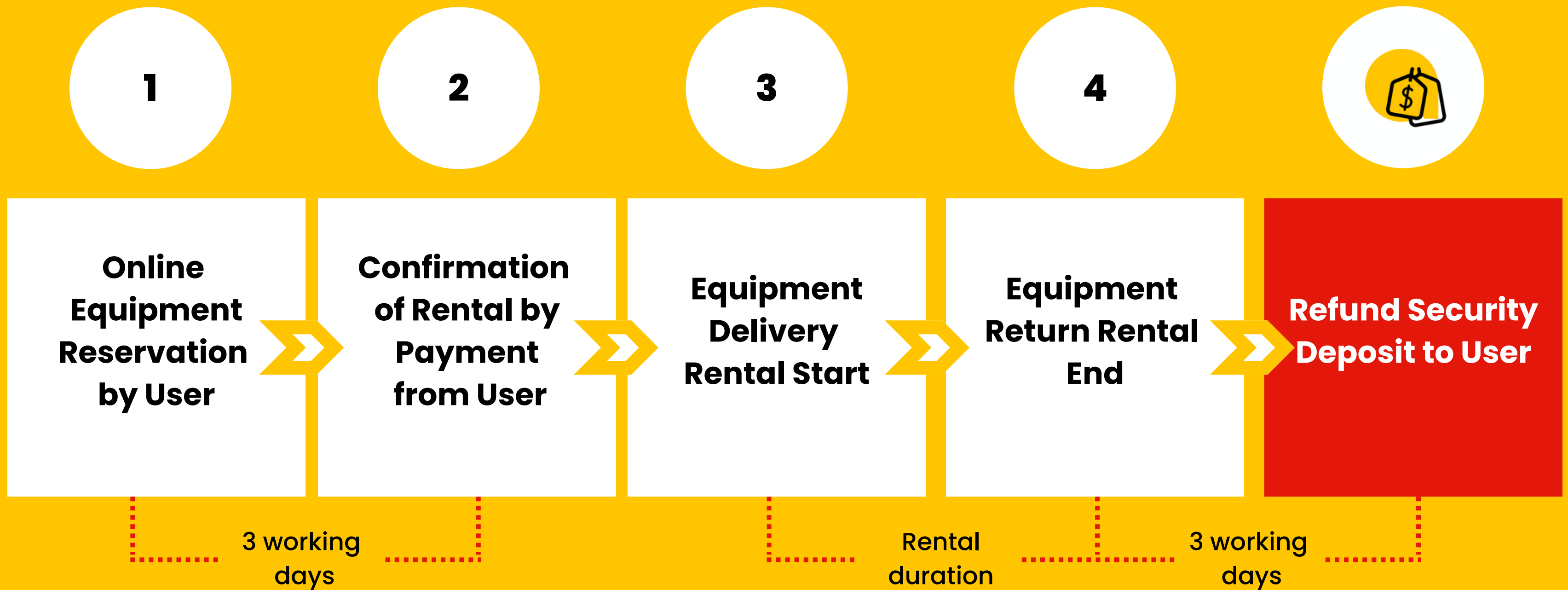
(Once decided, complete the equipment reservation by providing the necessary information and check out. We will reach out to you with an invoice via email)



Receive your equipment and start working

(Upon confirmation of the processing fee, you will receive your item on your scheduled day, and you will be able to begin working)

The rental process



FAQ (1/6)

Refer FAQs here: <https://antbuildz.com/faq/users>

1. Are we forming an agreement with antbuildz.com or Partner?

- You are in agreement with antbuildz.com.

2. Is there any fees that will be charged to me?

- No. antbuildz.com is a completely free platform for USER to use, no commission will be charged to you.

3. How can I trust Antbuildz by making advance rental payments?

- Antbuildz's mission is to bring in innovative technology to help you rent your equipment faster, easier, and cheaper. The payment will be kept in our escrow account to ensure the interest of both parties is protected. In addition, there is no reason for Antbuildz to default the payment and jeopardize our company reputation which may cause more than the rental payment itself.

FAQ (2/6)

Refer FAQs here: <https://antbuildz.com/faq/users>

4. Is the rental included in the operator?

- No. At this moment, all the rental is on a bare rental basis, except the lorry crane, mobile crane, and drone

5. How long in advance can I book the equipment?

- You can book the equipment at least 3 days in advance of the prior start of the rental. However, payment must be made within 3 working days after reservation to confirm the order.

6. What is the minimum duration to rent the equipment?

- You can rent the equipment for as minimum as one day, 24 hours.

FAQ (3/6)

Refer FAQs here: <https://antbuildz.com/faq/users>

7. How much does it cost to rent daily, weekly, and monthly?

- The rental rates of equipment are based on the price listed by Partner and it may change from time to time. You can check the real-time rental rate on antbuildz.com by searching for your preferred construction equipment.

8. Why do I need to rent by paying advance rental when there is another supplier that can offer credit terms?

- Antbuildz.com help you discover the best price. With the advance rental, Partner can offer a much cheaper rate than the market rate. You can have a huge savings in your expenses and increase your profit margin. Secondly, Antbuildz can save all your precious time in sourcing, clarifying, comparing, and negotiating. We offer you a great value and rental experience. We will ensure your interest are fully protected throughout the entire rental period.

FAQ (4/6)

Refer FAQs here: <https://antbuildz.com/faq/users>

9. Can I cancel my booking after receiving order confirmation?

- Yes. However, cancellation fees might be applicable for specific cases.

10. Can I change the start date after receiving of order confirmation?

- If you rent the equipment for a duration of one month or more, USER can postpone the rental start date up to a maximum of one week.
- If you rent the equipment for a duration of less than a month, USER is strictly not allowed to postpone the start date.
- If you wish to change the start date earlier, you can communicate with the Antbuildz team. The request will be strictly subject to equipment availability from the PARTNER.

FAQ (5/6)

Refer FAQs here: <https://antbuildz.com/faq/users>

11. Should I cover the equipment with insurance during the rental?

- Yes, the insurance coverage is under your scope during the rental period.

12. Can I collect and return the equipment myself?

- Yes. There is an option for self-collect or delivery service.

13. Who takes care of the equipment maintenance?

- PARTNER will be responsible for routine maintenance of the rented equipment such as lubrication, engine oil change, hydraulic oil change, or any wear and tear.

FAQ (6/6)

Refer FAQs here: <https://antbuildz.com/faq/users>

14. How many hours I can use the equipment daily?

- You can use the equipment not more than 12 hours daily, or 1 shift. If you need to use the equipment more than 12 hours daily, you must inform to Antbuildz team and the extended hour will be charged pro-rated. Moreover, we will also need to adjust the routine maintenance schedule to ensure the good condition of the equipment

15. Can I extend my rental after the rental period expire?

- Yes, you can request for rental extension at least 72 hours prior to the end of the rental duration via, email, call, or WhatsApp. The approval will be strictly subject to equipment availability.
- If the rental extension is approved, you shall make immediately payment within 72 hours to confirm the extension. Otherwise, the rental extension will be considered canceled.